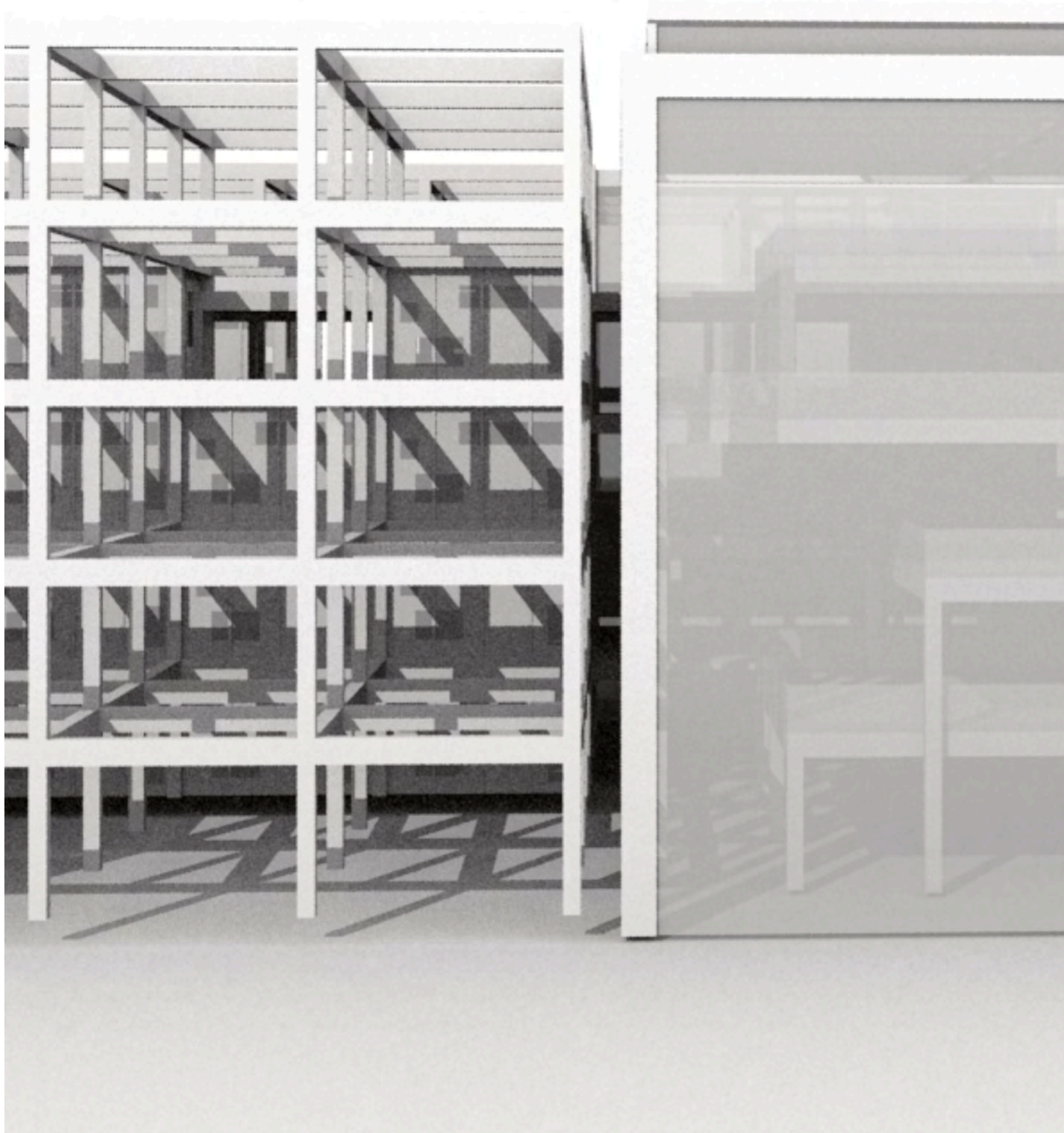


CONTENTS

Open Shared Apartment	<i>01</i>
Renovation, industrial park, modern, respect for history	
Community Library	<i>02</i>
The richness and sustainability of community life	
Vertical Farm	<i>03</i>
The richness and sustainability of community life	
City Music Hall	<i>04</i>
The richness and sustainability of community life	
Co-Living House	<i>05</i>
Virtual and real relationship, facade wall, guide	
Collective Apartment	<i>06</i>
Open, friendly and tolerant	
Other Work	<i>07</i>
Water Color	



OPEN SHARED APARTMENT

The richness and sustainability of community life

Location: Detroit, Michigan

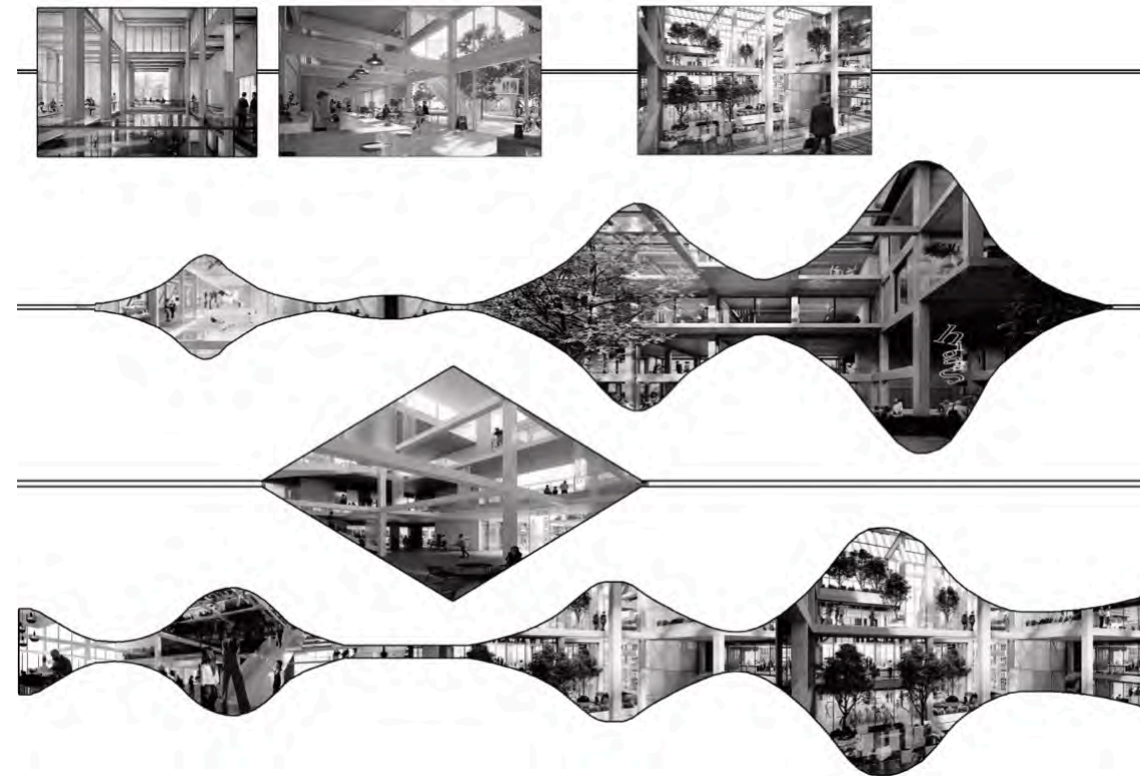
Contribution: All

Individual work; four weeks

This project is located in a mixed public and private high-rise residential area. The richness and sustainability of community life is also the theme of the design. All public areas of this project are open to the public. The innovation of the design lies in the public space. The external area and the shared space are intertwined and appear in clusters of towers, which can travel freely from the ground floor to the top floor. Each apartment can share a sheltered community terrace garden. Its purpose is to promote interaction among residents and make it a part of daily life. Every resident can pass through or overlook the garden from the elevator to the door of their house to greet their neighbors, or chat with their neighbors here. Children can also use this as a playground for playing.

A public building complex that integrates all public facilities and service spaces into one building volume. Different from taking the land separately in the traditional situation, several independent and unconnected buildings have been constructed; this one-stop building complex maximizes the use of land and provides a model template for future apartments. The ground floor is a completely public, highly permeable pedestrian space; the pattern of floor tiles on the square, the landscape and the outdoor rest area extend outward to activate the existing connection between the complex and the surrounding buildings. The community park is located in the upper area. It is a more private vertical community green space to promote residents to gather for exercise, chat, and even build a community farm together.

SCENE EXPRESSION



.....
scene one

.....
Scene two

.....
Scene three

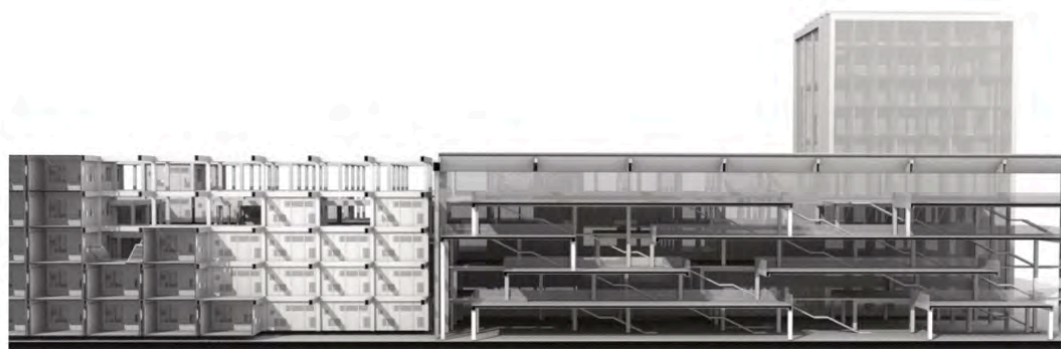
.....
Scene four

.....
Scene five

.....
Scene six

.....
Scene Seven

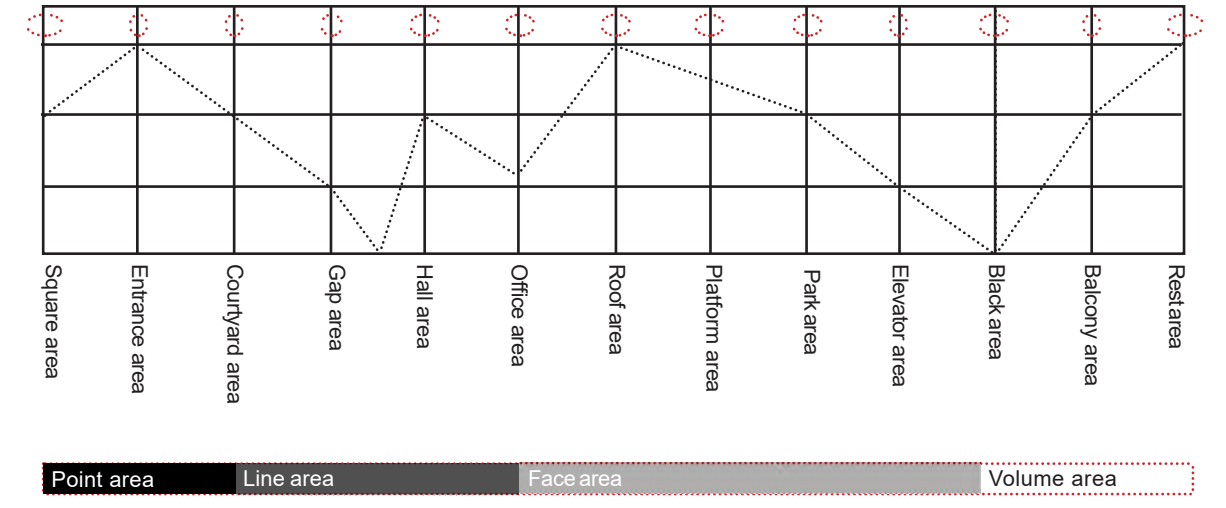
.....
Scene Eight



SECTION PLAN

EMOTION AND SPACE

emotional height



From an artistic point of view, the essence of architectural space is emotional space. Emotion makes architectural art different from the imaginary characteristics of general science.

ARCHITECTURAL DECONSTRUCTION

<p>The building completely adopts pre-casting and pre-construction construction methods.</p>	<p>Each apartment can share a sheltered garden. Its purpose is to promote interaction among residents.</p>	<p>The activity hall in the middle connects the residential areas on both sides. Natural light illuminates the hall.</p>
<p>The prefabricated frame space makes the layout flexible and changeable, and can adapt to a variety of family.</p>	<p>Public and external areas are intertwined, with multiple stairs connecting indoor and outdoor spaces.</p>	<p>On both sides are row upon row of supermarkets, coffee shops, small shops and children's facilities.</p>



Public external areas and shared spaces are intertwined and appear scattered in clusters of towers. Each apartment can share a sheltered community terrace garden, and every resident can walk through the road from the elevator to the door of the house. Over or overlooking the garden. Natural light illuminates the hall, steps and entrance walkways, and natural ventilation passes through the hall. The open and ventilated design allows all apartments to have excellent natural ventilation, and most apartments do not need to install air conditioning. The roof is equipped with a photo voltaic power generation system. The building completely adopts pre-casting and pre-construction construction methods, reducing waste and avoiding errors. The design creates a variety of layouts by rearranging the units, and the colors of light and shadow are also varied.



TAIJIANG DISTRICT COMMUNITY LIBRARY, FUZHOU

Virtual and real relationship, facade wall, guide

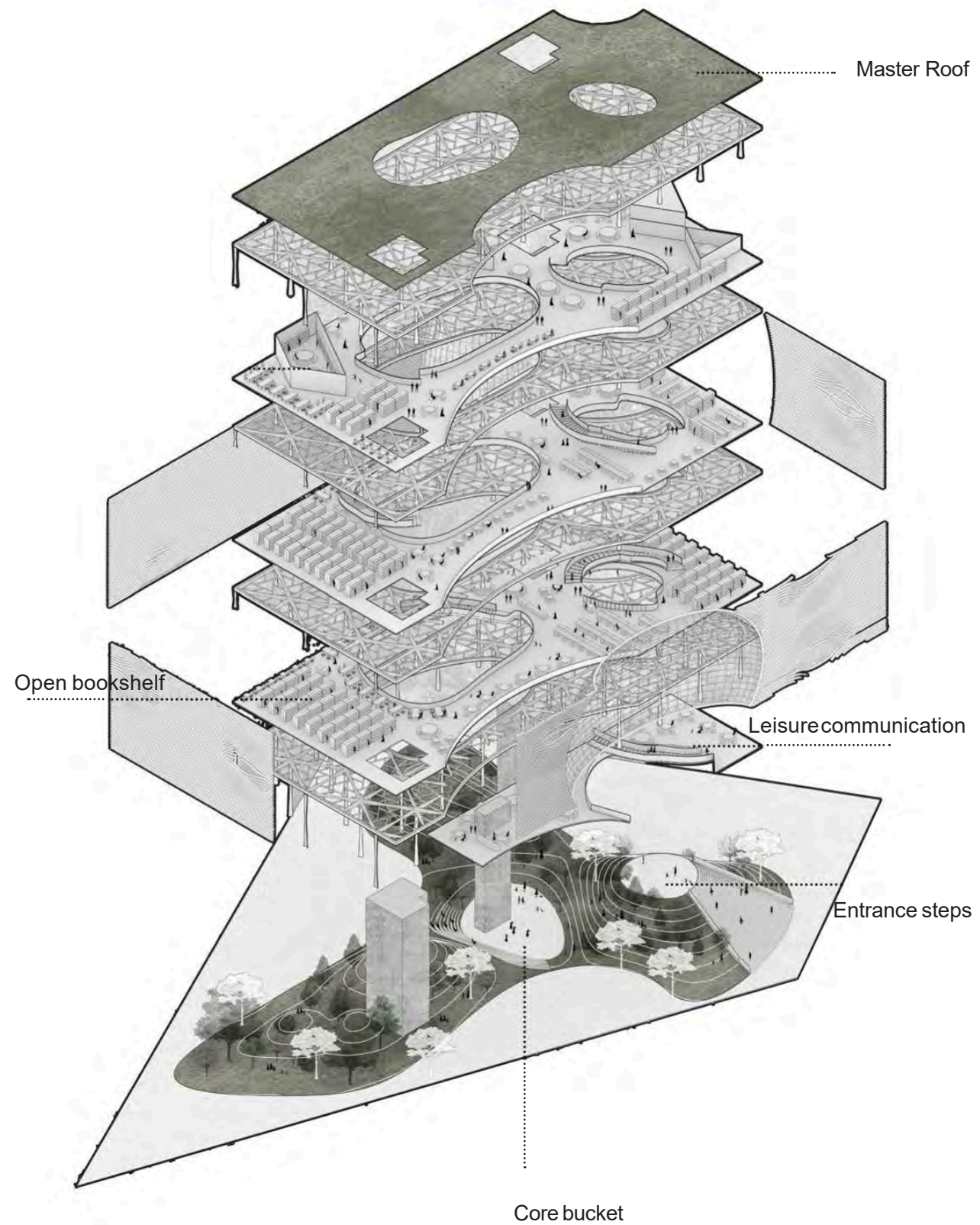
*Location: Fuzhou, China
Individual work*

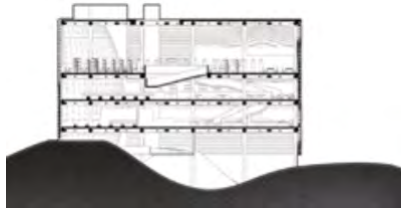
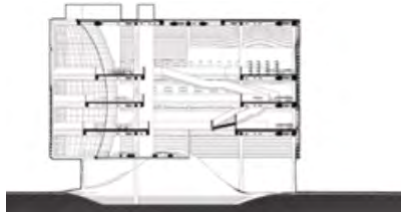
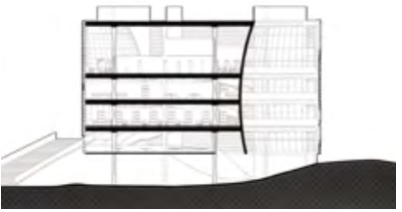
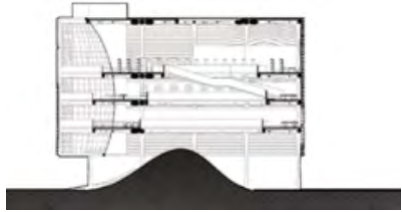
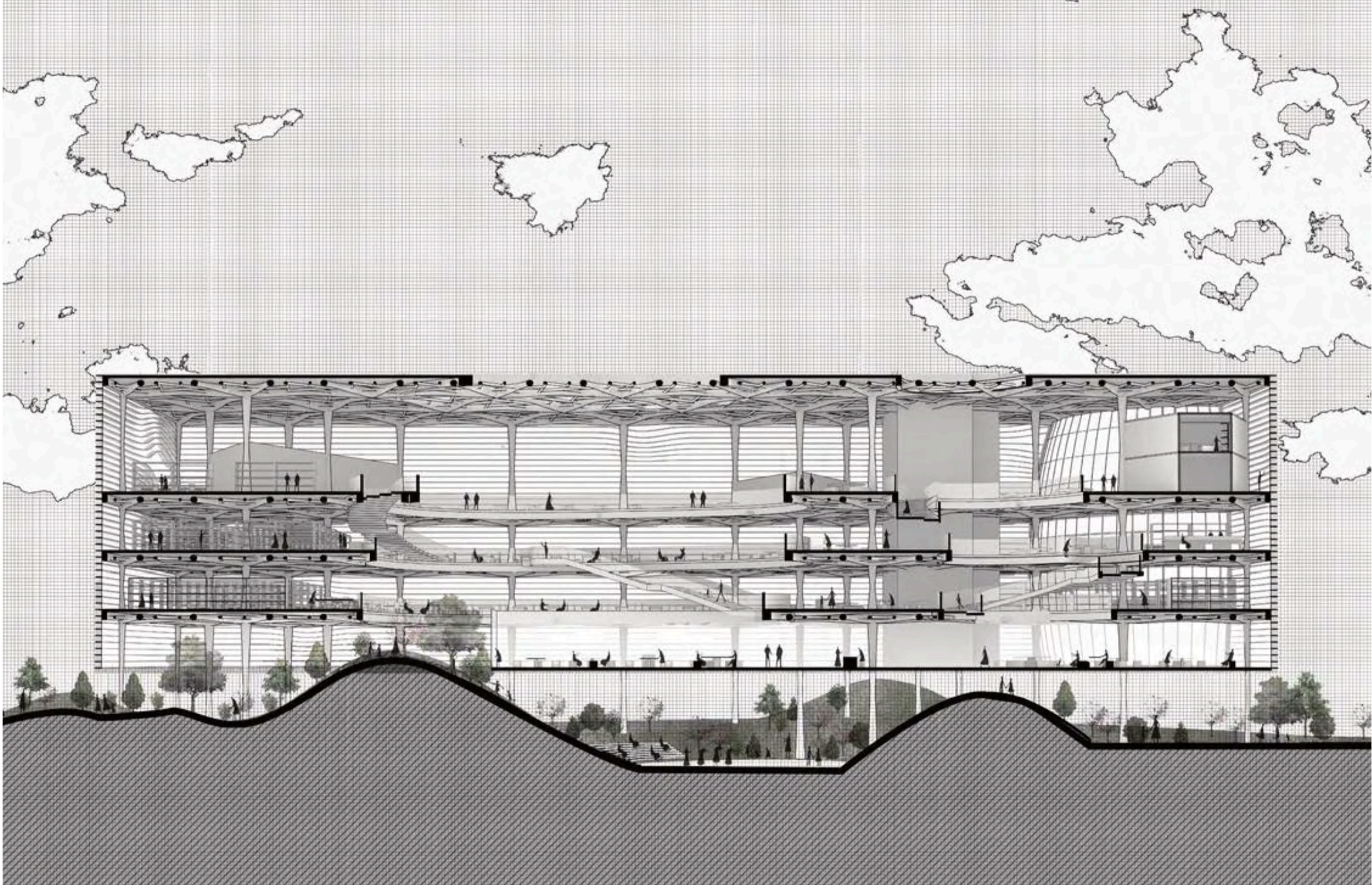
The proposed library is located at the main traffic road of the community, which also determines that the library must be representative of the community. As a campus building, it must have a simple, rational, and stable character. At the same time, its design should have a sense of the times, so that it reflects a young, upward, and advancing with the times. These are the basic concepts that our designers adhere to when they work.

Due to the limited construction land, the design must be "tailored". In the design, minimize the footprint and optimize the layout to obtain a richer and more lively shape. In the end, I got the handsome and upright building image I see now.

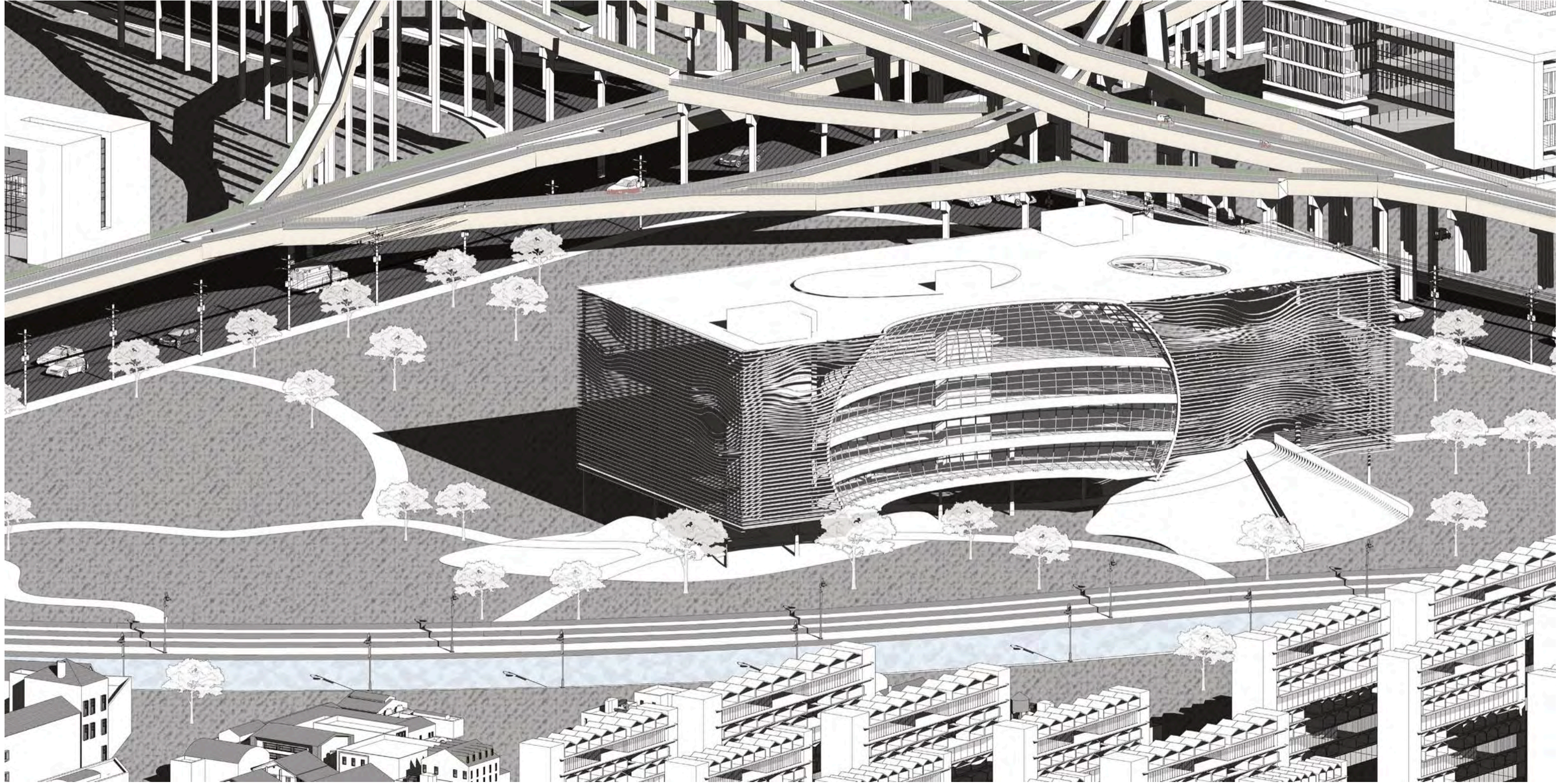
As a community library, it needs to have all the characteristics of a general library and its uniqueness. From the perspective of external flow, community libraries focus on considering the organic connections within the community. In terms of use functions, in addition to the functions of data storage and data sharing, citizens' choice of self-study in the library has become unavoidable for community libraries. Functional requirements, how to deal with the intersection of self-study students and reading citizens, and effectively guide the development of self-study students from self-study needs to reading and research needs, how to successfully guide the relatively concentrated flow of people in community libraries, is a layout design that needs to be considered from beginning to end. The problem.

As the soul and the hall of knowledge of a city, the library not only carries the important task of delighting the body and mind and satisfying the aesthetics, but also carries the carrier of history, culture and humanistic spirit. This design needs to reflect its design concepts such as humanity, ecology, openness, intelligence and symbolization.

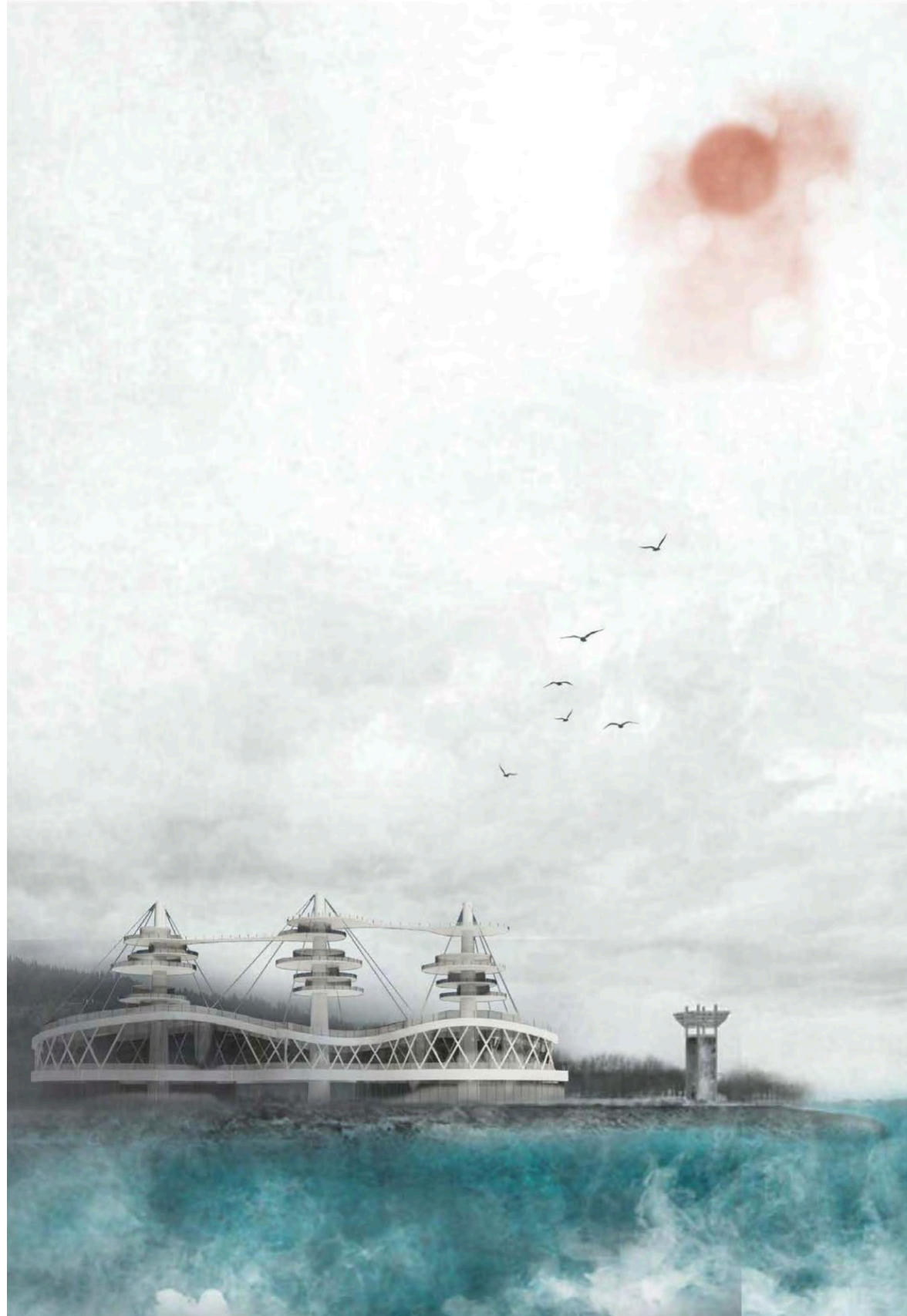




Taubman College



Bird's-eye view
As the soul and the hall of knowledge of a city, the library not only carries the important task of delighting the body and mind and satisfying the aesthetics, but also carries the carrier of history, culture and humanistic spirit. This design needs to reflect its design concepts such as humanity, ecology, openness, intelligence and symbolization.
Due to the limited construction land, the design must be "tailored". In the design, minimize the footprint and optimize the layout to obtain a richer and more lively shape. In the end, I got the handsome and upright building image seen now.



VERTICAL FARM

Renovation, industrial park, modern, respect for history

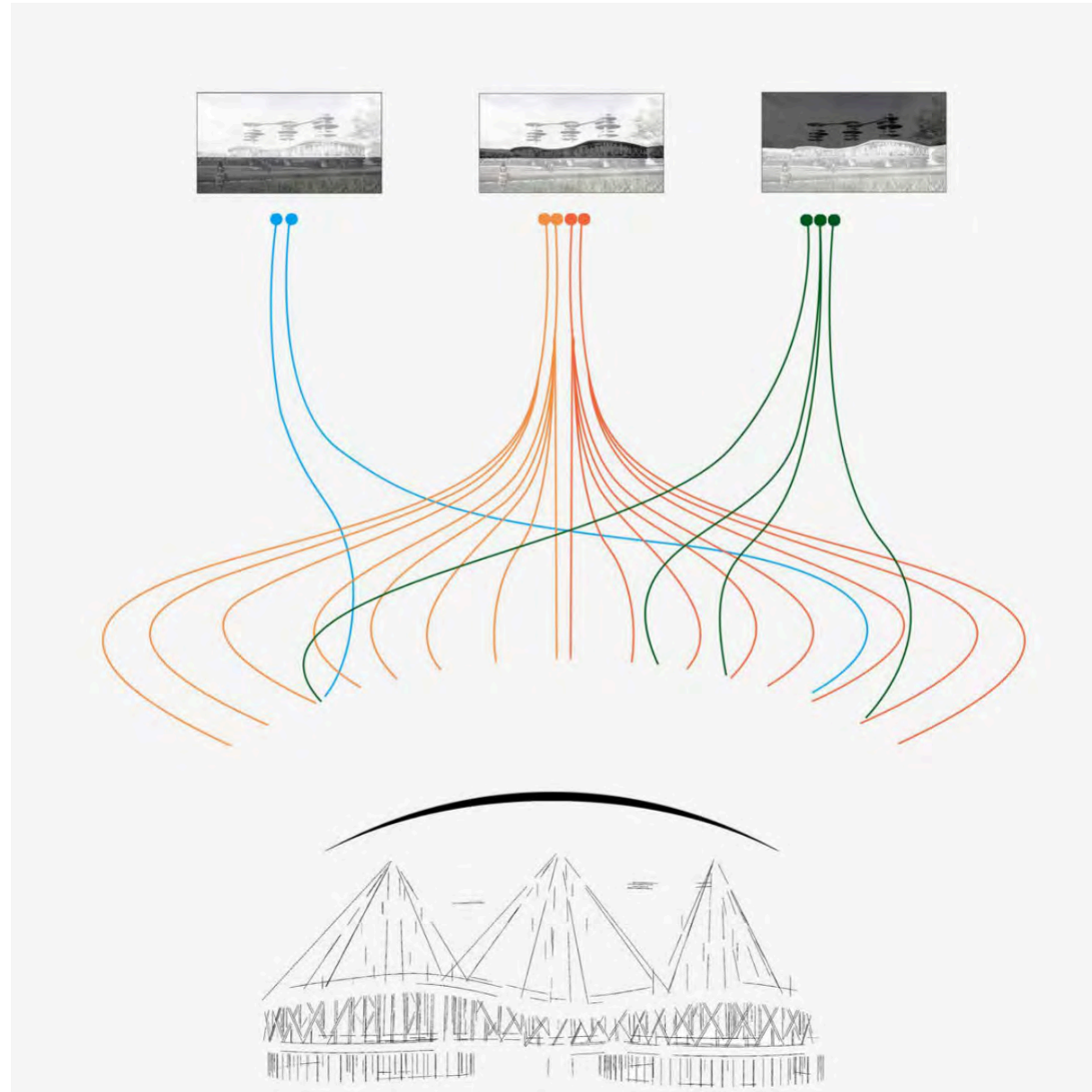
Location: Liupanshui, China

Contribution: All

Individual work; four weeks

This plan uses a large number of metal materials and is full of fashion. The underground lighting and the internal light-transmitting light processing method make the three-dimensional sense of the entire building space more enhanced, maintaining the gray ground of the original building, saving money in economics, and being able to reuse it. And the most important thing is that it is well integrated with the interior color of the entire building, and innovative in style. In the west area, all floor-to-ceiling glass windows are used to isolate it from the outside world, so that it is well connected with the natural scenery, and can make the whole building space brighter and make the whole space more spacious. The research goal is to rely on young architects as the main support, positioning on the theme of fashion, personality and publicity. Build a utopia belonging to the younger generation. Design individuality, publicity and characteristic theme. Build a utopia belonging to the younger generation.

The design retains the original internal structural components of the factory as much as possible. While maintaining the characteristics of the existing environment, modern new materials and new technologies are boldly applied to the interior of the building. Point out the way out for a large number of remaining factories. Facade elements retain the basic characteristics of industrial buildings and pay tribute to the industrial age. Make the architectural image the central landscape of the community.



Toddler



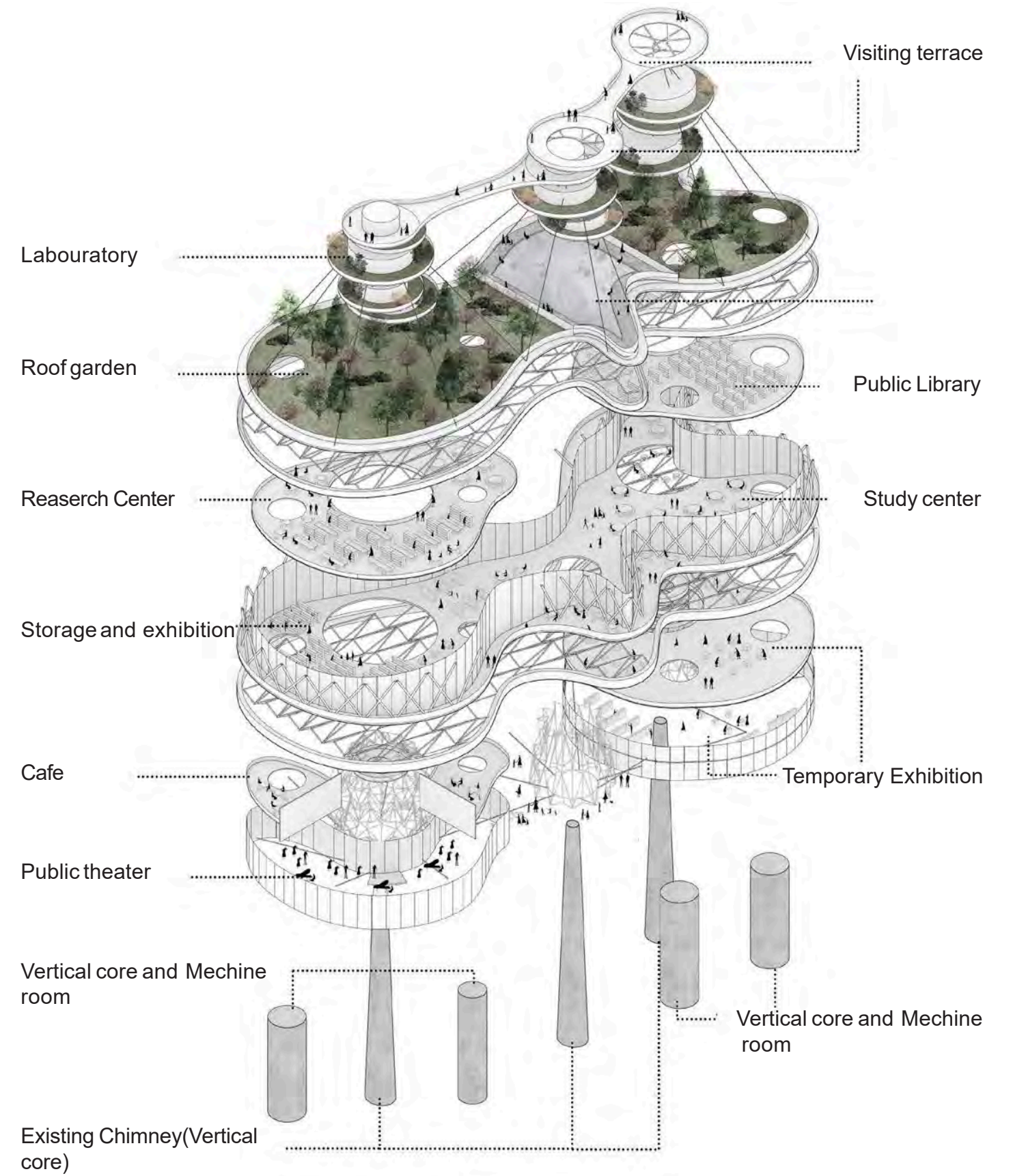
Old man

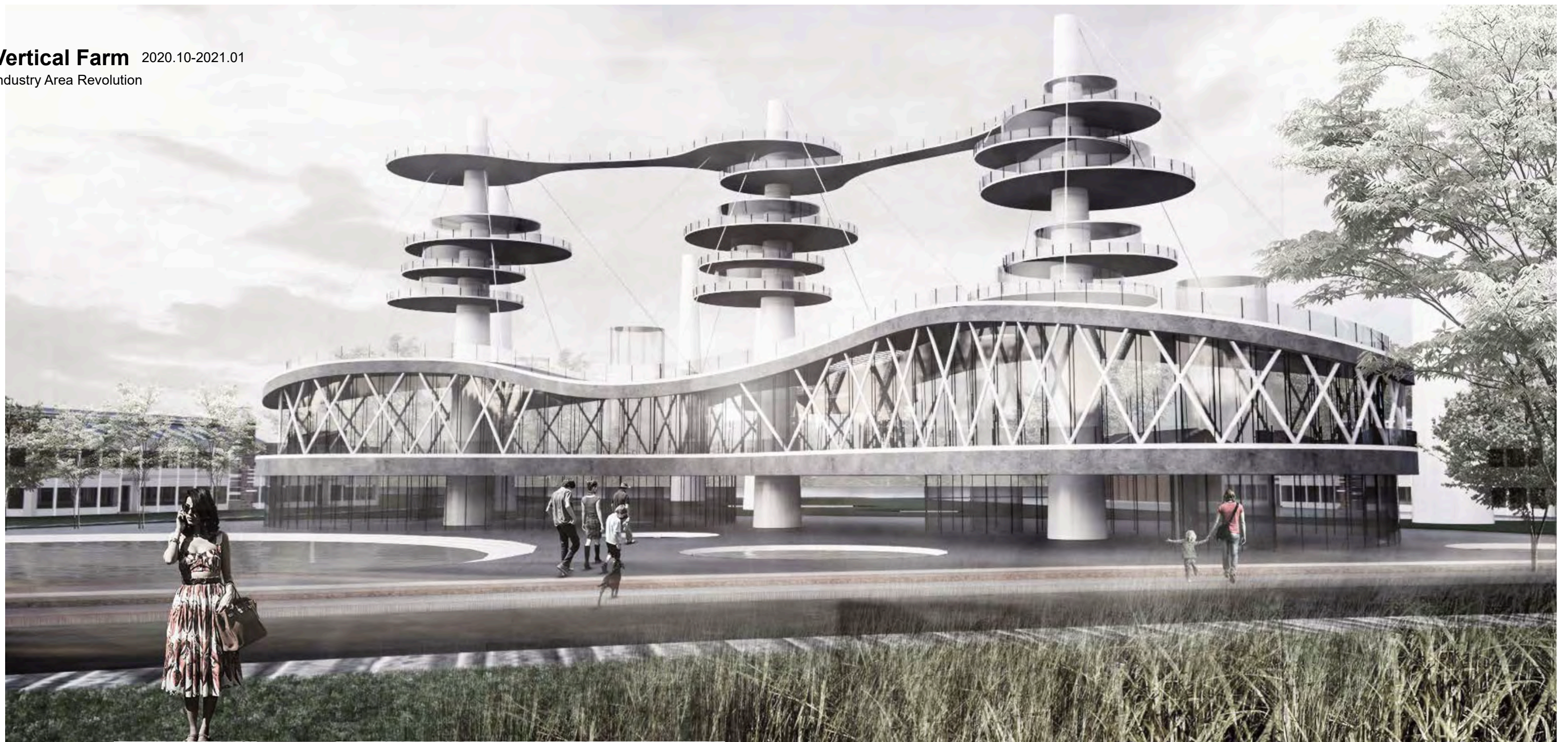


teens



Surrounding residents





Taubman College



landscape platform



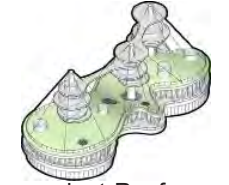
interior space



sanitation pipe



core traffic barrel



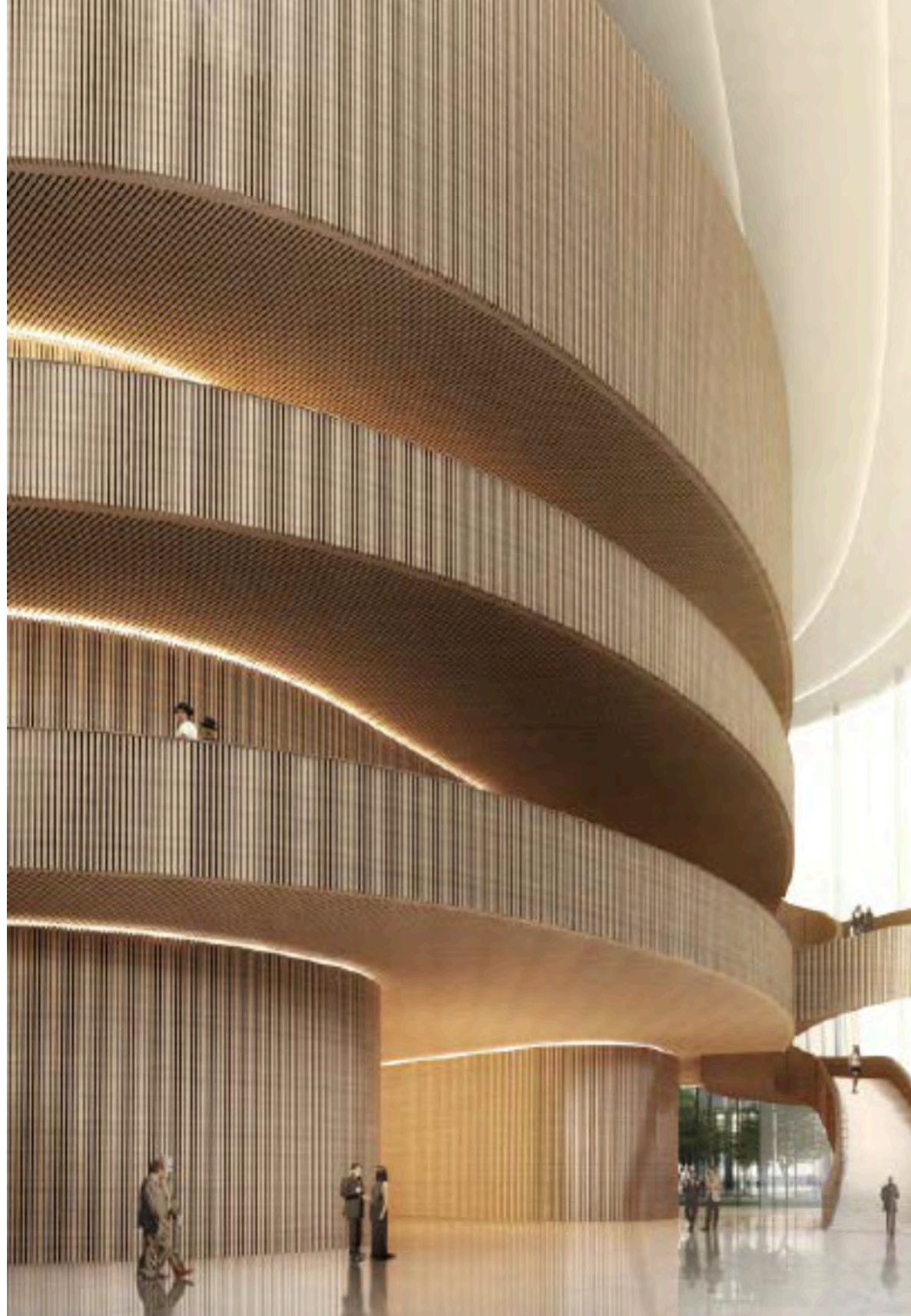
plant Roof



ground floor space

City Music Hall 2021.05-2022.07

Open, friendly and tolerant



CITY MUSIC HALL

Open, friendly and tolerant

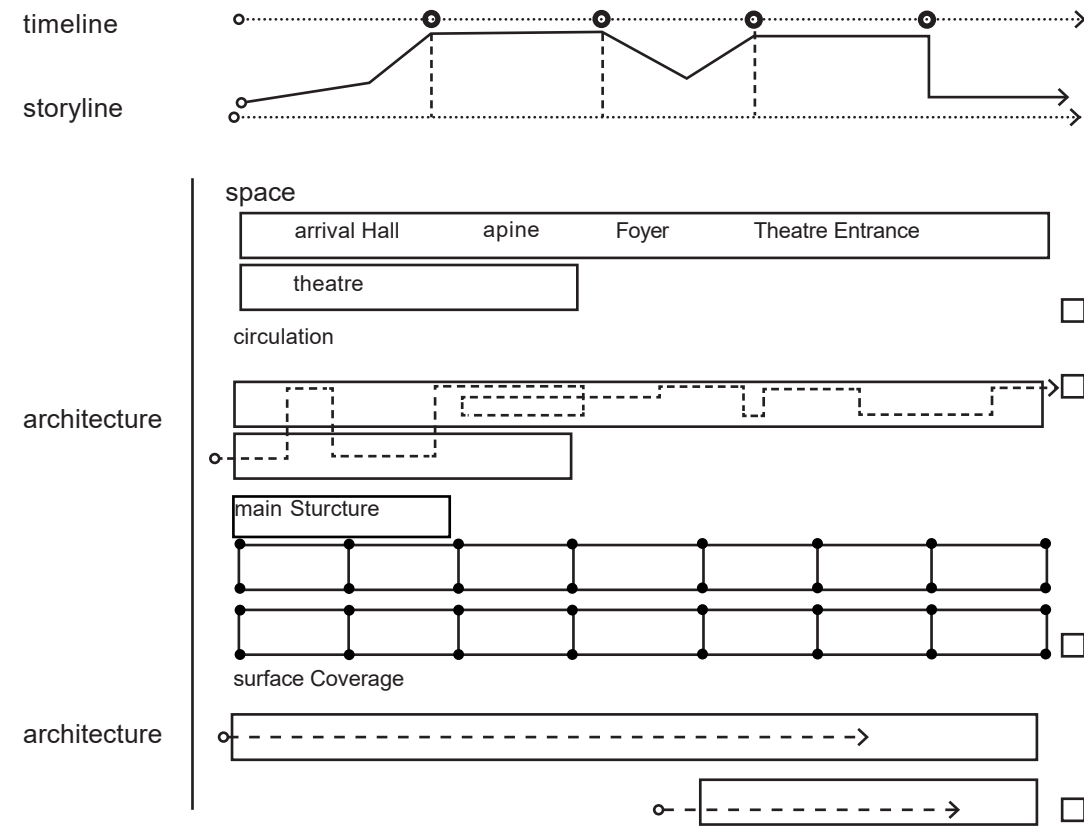
*Location: Cheng du, China
Individual work*

The theater building is no longer a traditional closed, dark and secret "black box" space. Today, theater design must show an open, friendly and tolerant attitude, with the goal of attracting a wider public so that everyone can appreciate the performing arts. Therefore, transparency is an important element in the design of this new comprehensive theater for performing arts; it must be able to openly display the activities that are taking place inside, and attract both theater audiences and general visitors. In addition, the comprehensive theater also provides performances outside the schedule for the public to further promote this spirit of openness and tolerance. Even the resident arts troupe office located above the small theater has added a design that allows the audience to enjoy the dance and rehearsal space from the outdoor plaza. This transparency further activates the art plaza to the north of the complex.

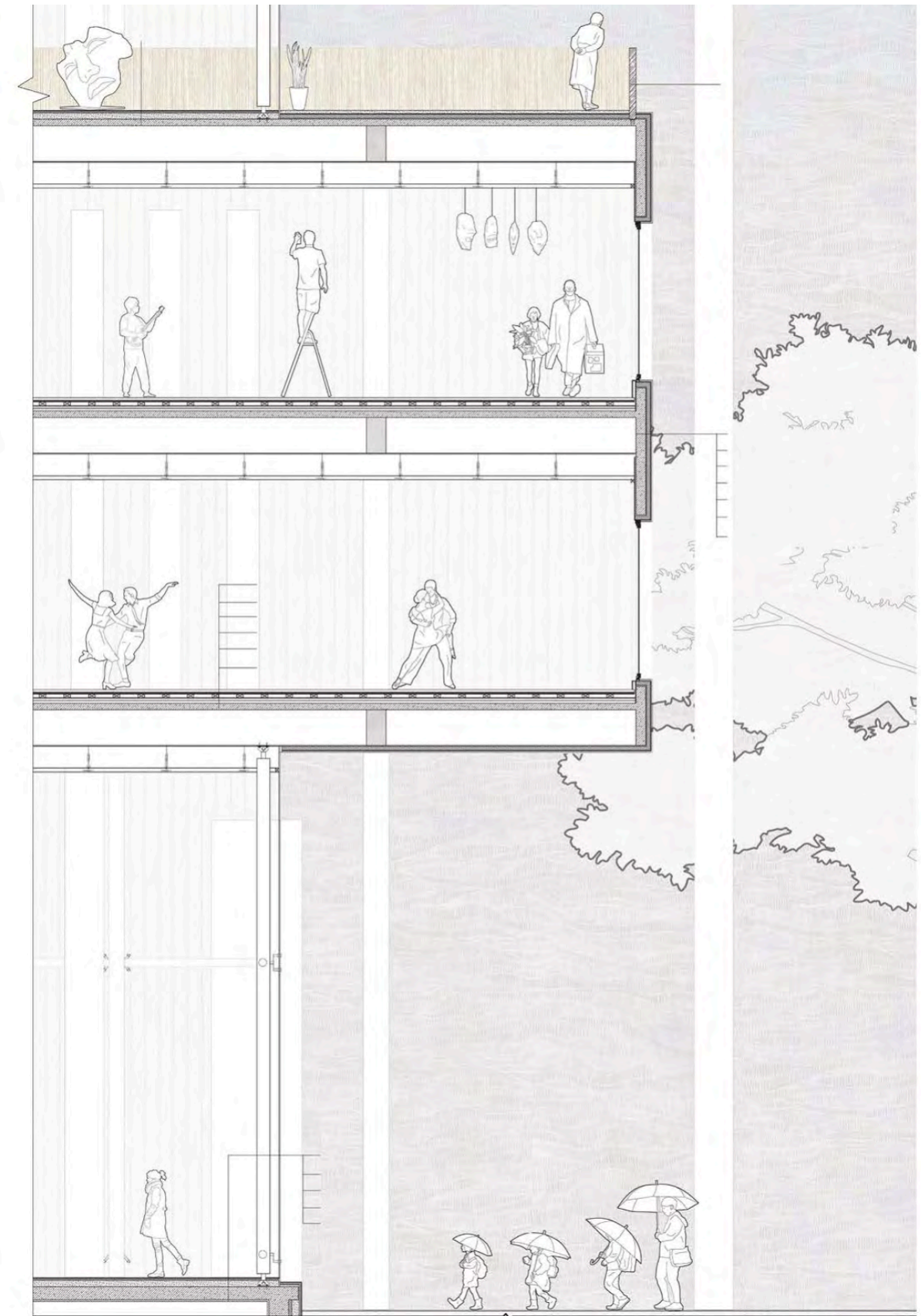
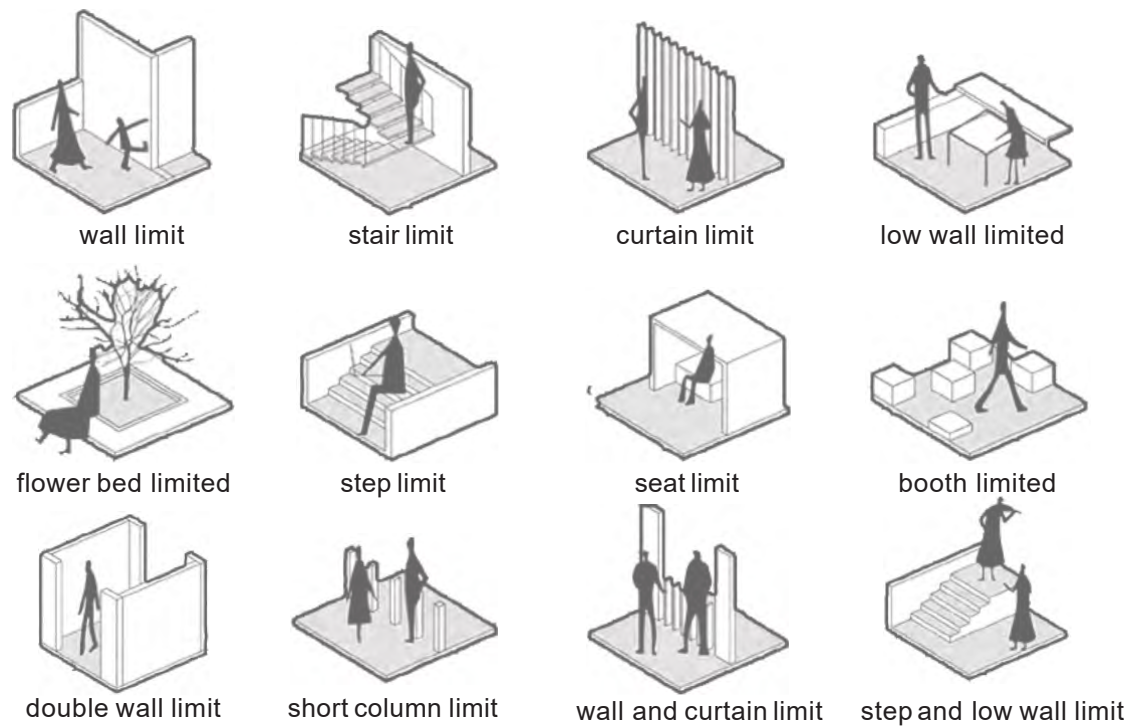
Create openness in a very compact space, provide a public-facing design for private performances, and transform the black box nature of the theater into a highly transparent and interactive place. We have created a home for art and a stage for the public. Although the three theaters in the comprehensive theater each represent different types of performing arts, their design follows a unified philosophy, which can not only establish a complementary theater family, but also maintain the continuity of the building's design.

City Music Hall 2021.05-2022.07
Open, friendly and tolerant

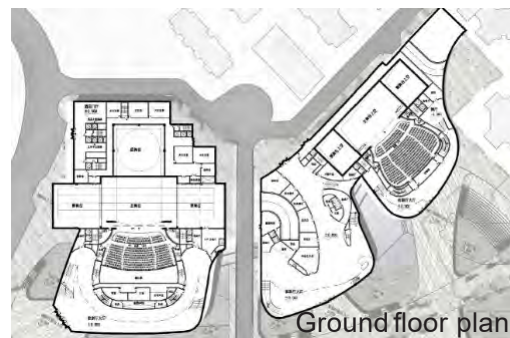
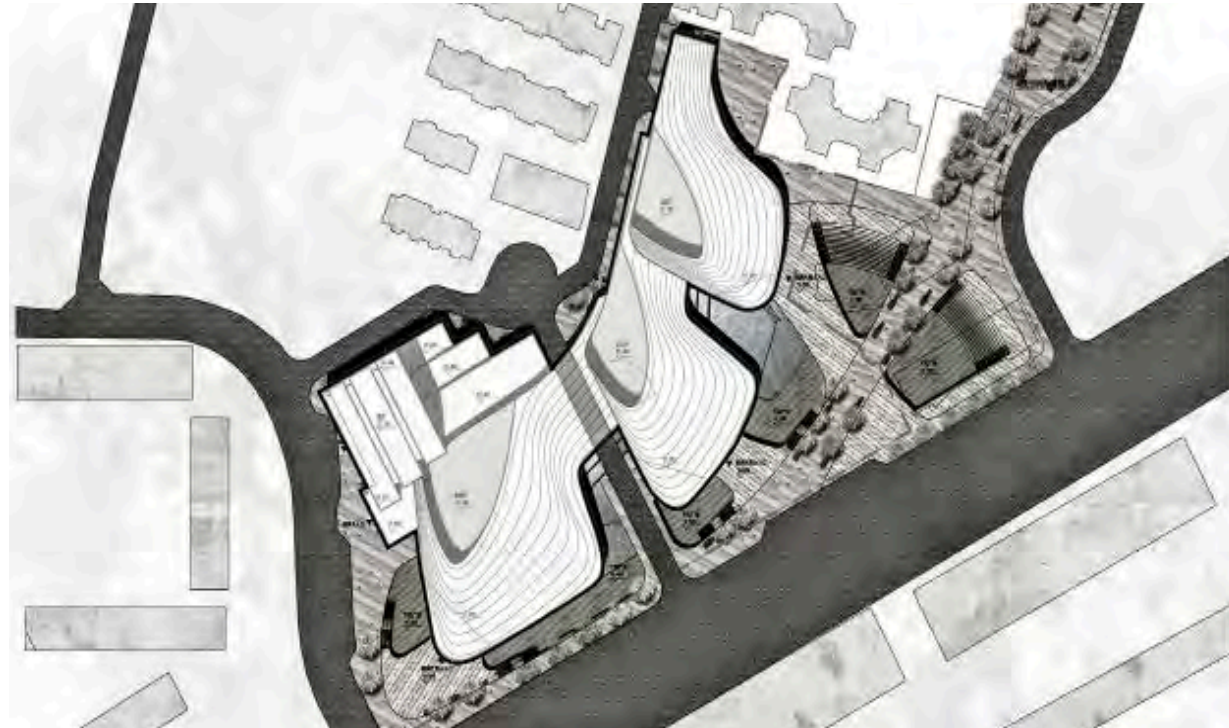
NARRATIVE INTERPETATION



SPACE LIMITATION



City Music Hall 2021.05-2022.07
Open, friendly and tolerant



Ground floor plan

- 01. entrance
- 02. theater
- 03. main stage
- 04. store
- 05. management room



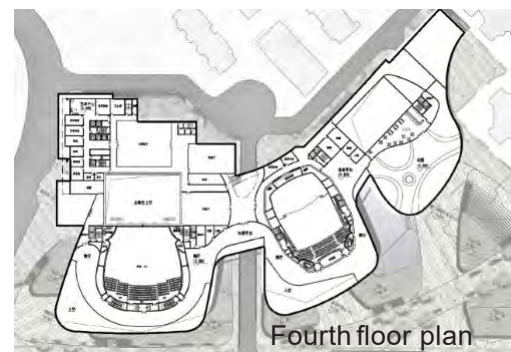
Second floor plan

- 01. powder room
- 02. side hall
- 03. information desk
- 04. rest platform
- 05. lounge



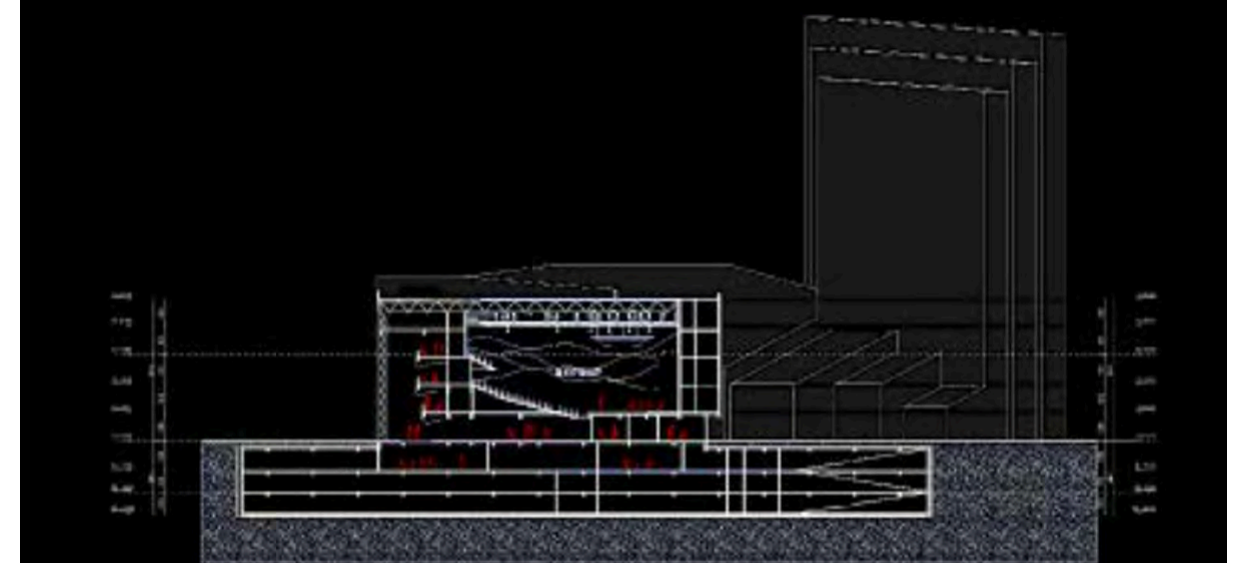
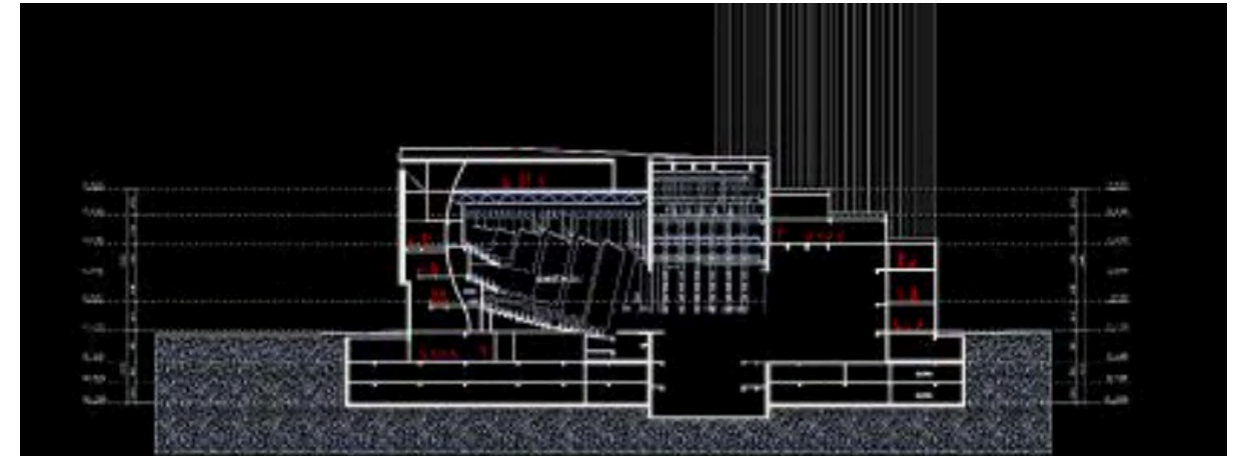
Third floor plan

- 01. rest platform
- 02. over the main stage
- 03. office
- 04. traffic core
- 05. production room



Fourth floor plan

- 01. rehearsal hall
- 02. music Classroom
- 03. cafe
- 04. warehouse
- 05. garden



Auditorium reverberation time in different performance modes (empty field)

frequenc Hz	125	250	500	1000	2000	400	Standard deviation	average
Concert hall	0.95	0.93	0.98	1.02	0.98	0.92	±0.03	0.92
Theater mode	0.95	0.90	0.93	1.06	0.97	0.95	±0.05	0.95

The test and analysis of sound system features

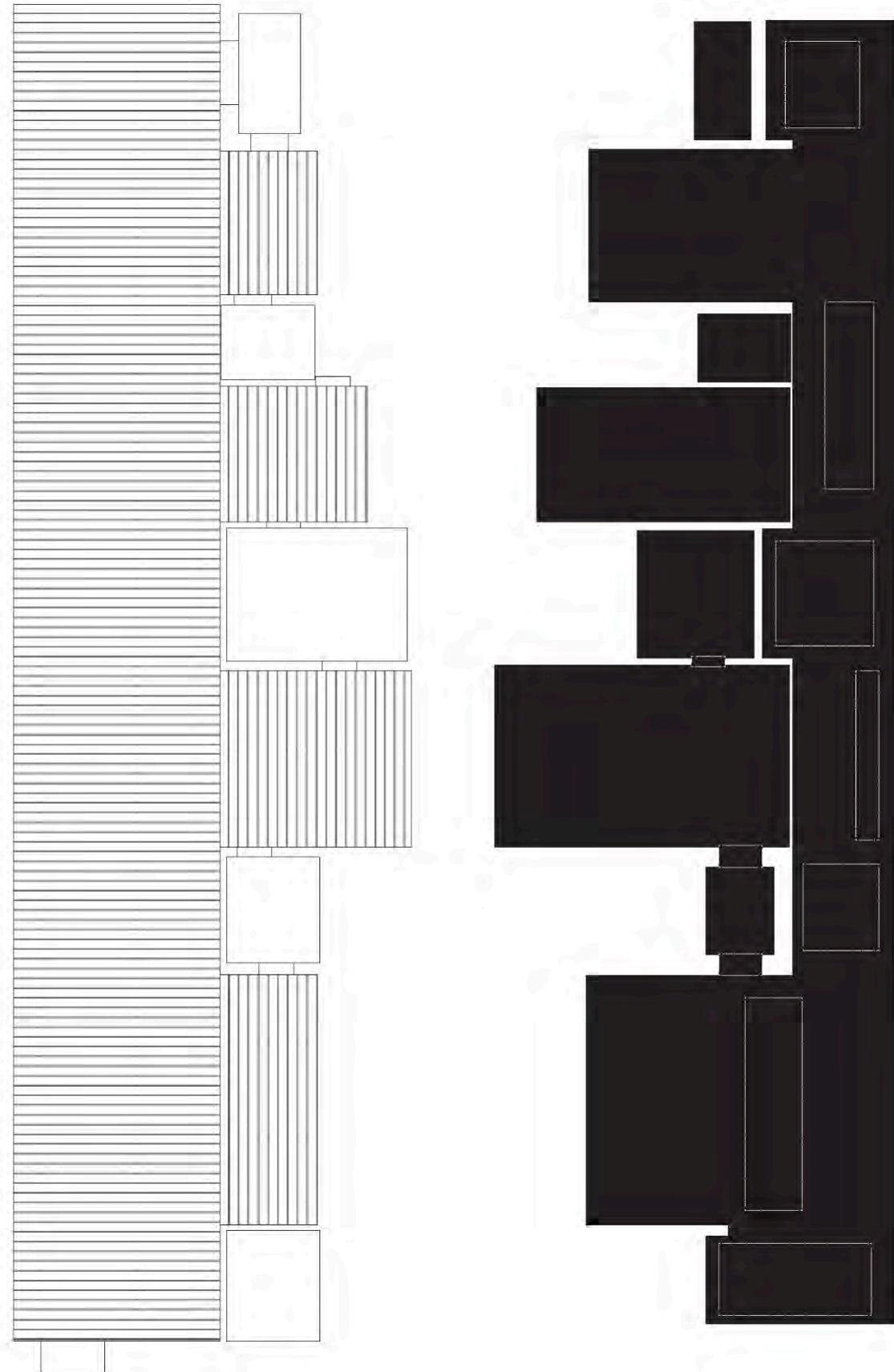
frequenc Hz	125	250	500	1000	2000	4000	8000
characteristic	1.5	0.5	3.4	1.5	0.9	-0.8	-4.0
Acoustic gain	-5.0	-5.2	-4.0	-1.9	5.0	-6.0	-9.0
Unevenness	4.2	4.0	4.5	3.0	4.0	4.0	5.0

City Music Hall 2021.05-2022.07
Open, friendly and tolerant



The Performing Arts Complex is a multi-purpose project, including three theaters (performing arts theater, medium-sized theater and small theater), a large rehearsal room (also can be used as an additional performing arts venue), and a resident arts group office (with 8 Dance studios and office facilities) and retail, dining and entertainment spaces. The design of various spaces in this very compact building is very challenging and exciting at the same time. In the end, we succeeded in creating a vibrant building to show the fascinating theater world, and will meet the needs of future theater audiences in Chengdu.

Taubman College



OPEN SHARED APARTMENT

The richness and sustainability of community life

Location: Detroit, USA

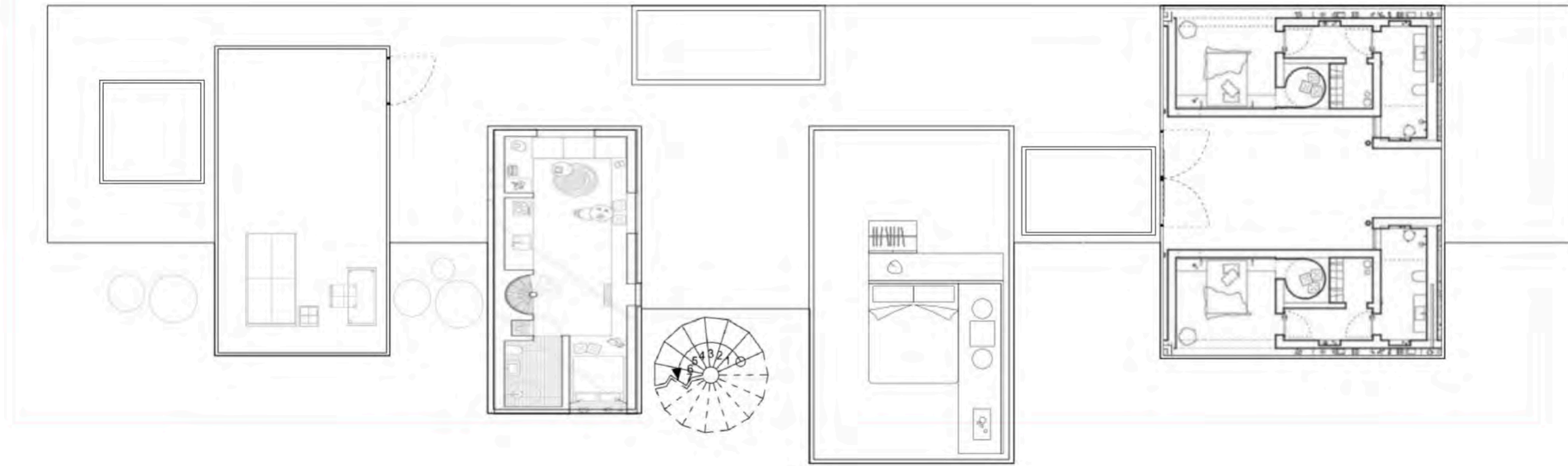
Contribution: All

Individual work; four weeks

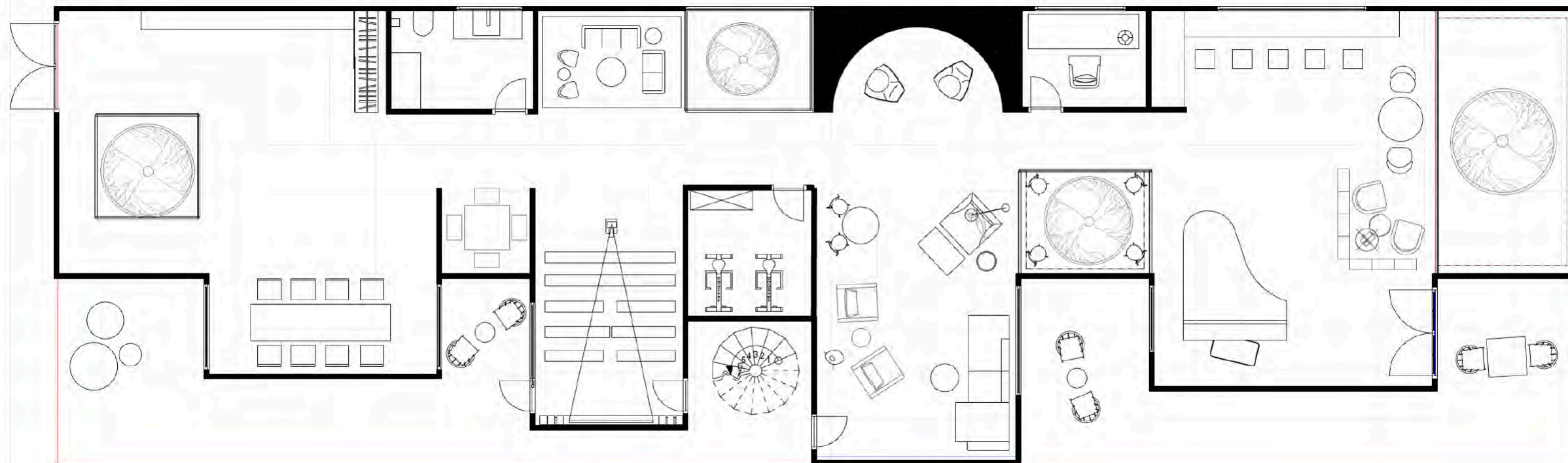
This project

This project is located in a mixed public and private high-rise residential area. The richness and sustainability of community life is also the theme of the design. All public areas of this project are open to the public. The innovation of the design lies in the public space. The external area and the shared space are intertwined and appear in clusters of towers, which can travel freely from the ground floor to the top floor. Each apartment can share a sheltered community terrace garden. Its purpose is to promote interaction among residents and make it a part of daily life. Every resident can pass through or overlook the garden from the elevator to the door of their house to greet their neighbors, or chat with their neighbors here. Children can also use this as a playground for playing.

A public building complex that integrates all public facilities and service spaces into one building volume. Different from taking the land separately in the traditional situation, several independent and unconnected buildings have been constructed; this one-stop building complex maximizes the use of land and provides a model template for future apartments. The ground floor is a completely public, highly permeable pedestrian space; the pattern of floor tiles on the square, the landscape and the outdoor rest area extend outward to activate the existing connection between the complex and the surrounding buildings. The community park is located in the upper area. It is a more private vertical community green space to promote residents to gather for exercise, chat, and even build a community farm together.

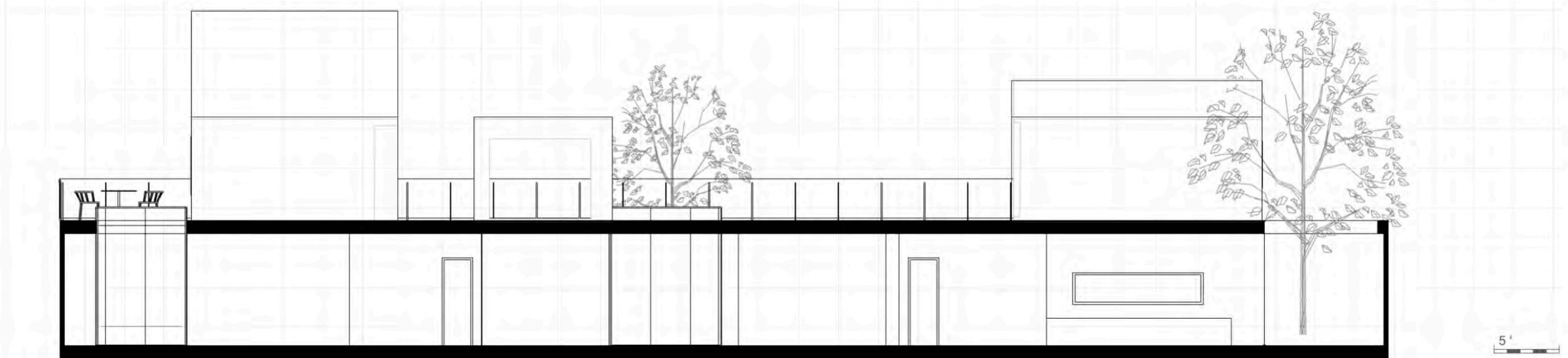


2nd Floor Plan



1st Floor Plan





Section



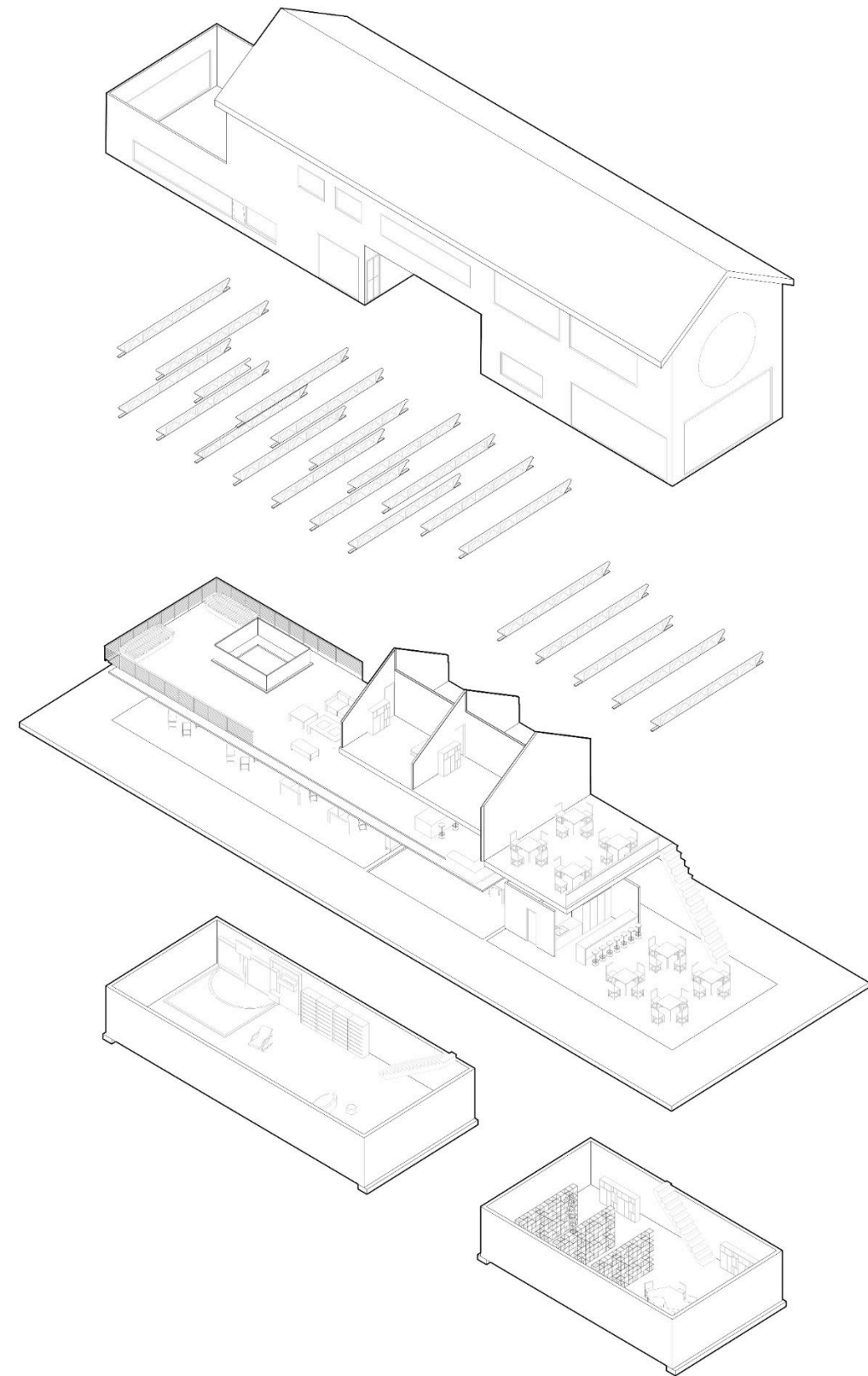
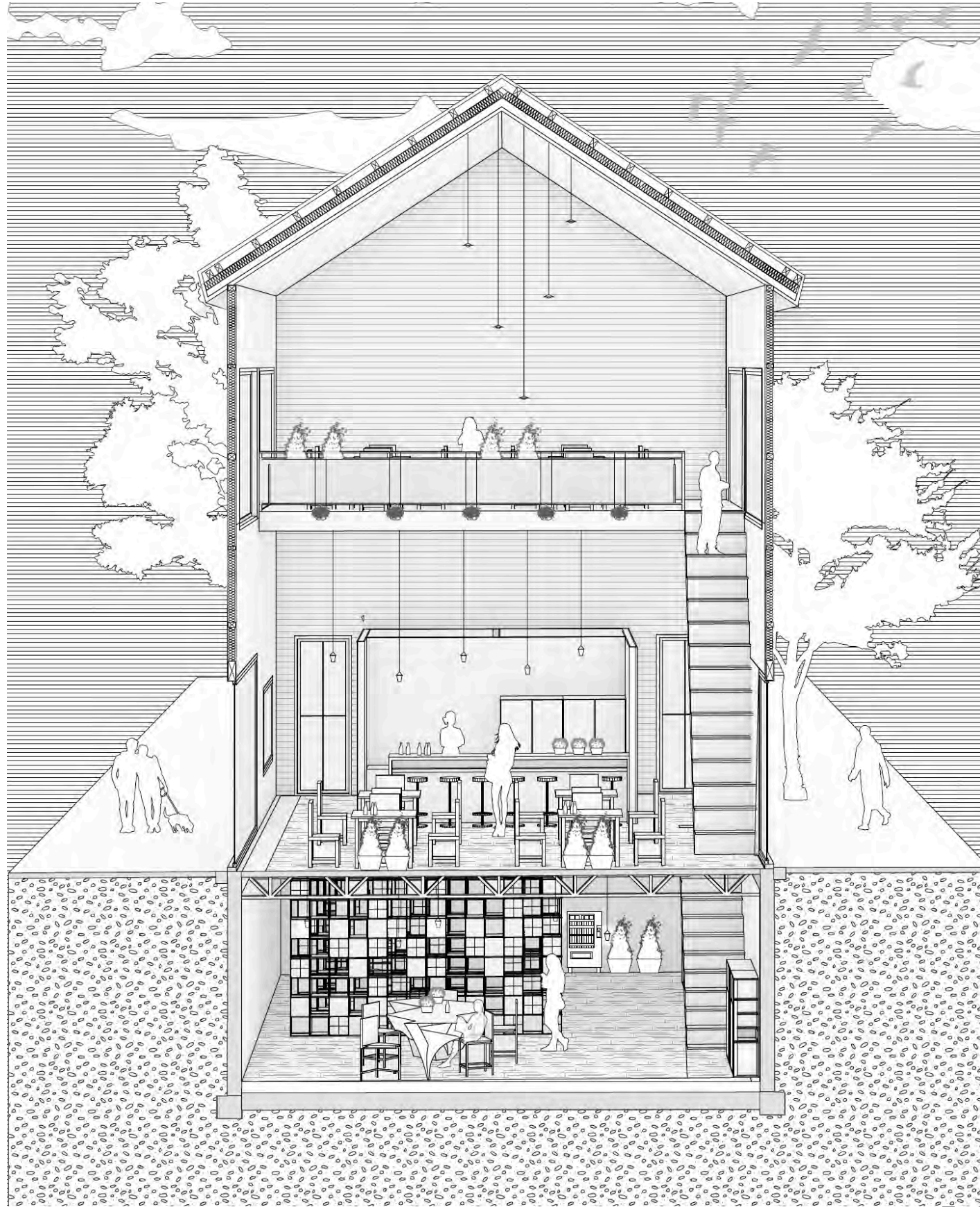
Elevation
Taubman College

Co-Living House 2021.09-2021.12
Form Studio

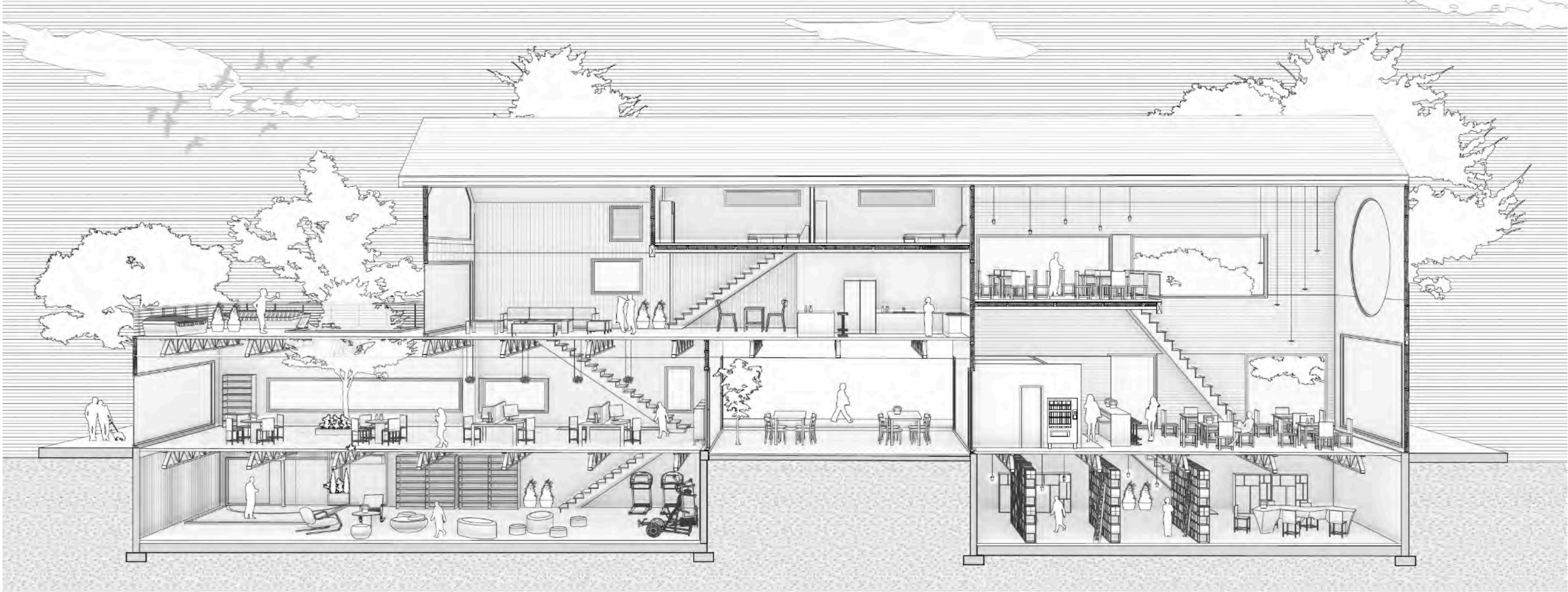


Collective Apartment 2022.05-2022.07

Open Shared Apartment



Collective Apartment 2022.05-2022.07
Open Shared Apartment





Koninklijk Paleis Amsterdam
03.06.27 T&O



Taubman College



Copenhagen
12.06.28 T&O

Other Work 2014.09-2019.07
Open, friendly and tolerant

